

INSTALLATION INSTRUCTIONS

DESCRIPTION: Winch Wiring Kit (VRX)

PART NUMBER: B4J-F28N0-V0

MODEL: 2021+ Wolverine RMax2 and RMax4



⚠ WARNING

Please read and understand these instructions completely before installation to avoid possible injury, or damage to the accessory or vehicle.

WARRANTY INFORMATION:

In the United States, see your Yamaha dealer for a copy of the Yamaha Genuine Parts and Accessories Limited Warranty.

NOTICE:

Installation of this kit requires a torque wrench and should be performed by an authorized Yamaha dealer or a qualified mechanic.

DEALER OR INSTALLER:

These instructions contain important information for future reference and *must* be given to the customer.

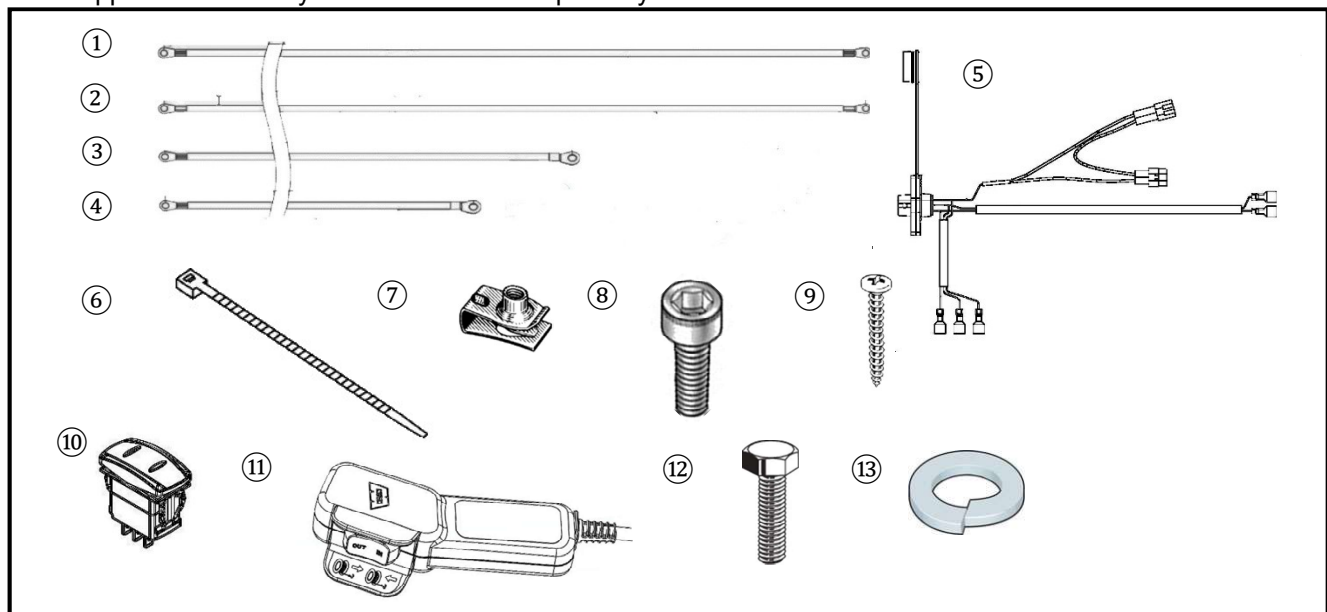
NOTICE: This instruction discusses parts that were designed for the Warn VRX 4500 line of winches.

- Parts listed on lines ⑩ and ⑪ are used to attach the winch to the stock front brush guard. Torque to 16Nm (1.6 m·kg or 11.8 lb·ft).

PARTS LIST:

No.	Part Number	Description	Qty
--	B4J-F28N0-V0	Winch Wiring Kit (VRX 4500)	--
①	B4J-F637E-V0	WIRE 1, RED 4500	1
②	B4J-F637F-V0	WIRE 2, BLACK 4500	1
③	B4J-F637J-V0	WIRE 3, BLUE 4500	1
④	B4J-F637K-V0	WIRE 4, YELLOW 4500	1
⑤	BAR-H7292-V0	Remote Control Cable	1
⑥	90464-80001	Cable Tie	12
⑦	90183-05073	M5 Spring Nut	2
⑧	90110-10092	M10x20 Socket Head Bolt	2
⑨	BG4-F4473-V0	#2 Phillips Screws	2
⑩	BAR-H259E-V0	Switch	1
⑪	BAR-H259F-V0	Hand Held Switch	1
⑫	BAR-E1026-V0	M8x20 Hex Head Cap Screw	4
⑬	92902-08100	M8 Lock Washers	4

* Part supplied with kit only and not available separately.



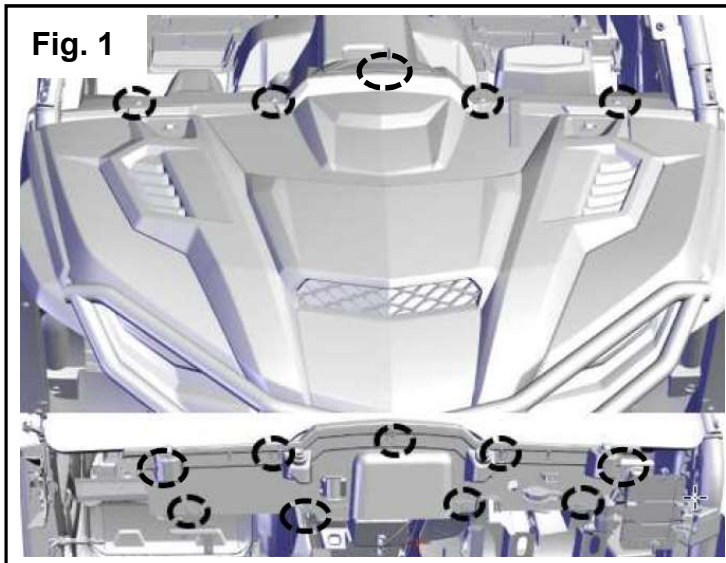


Fig. 1

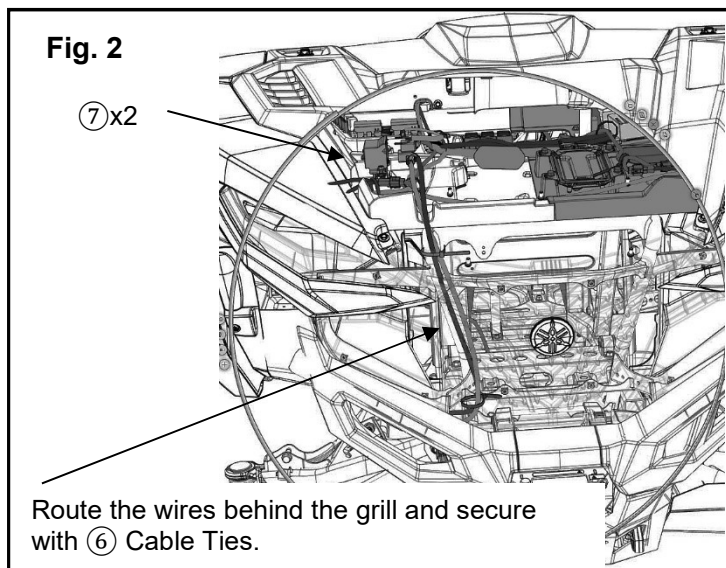


Fig. 2

Route the wires behind the grill and secure with 6 Cable Ties.

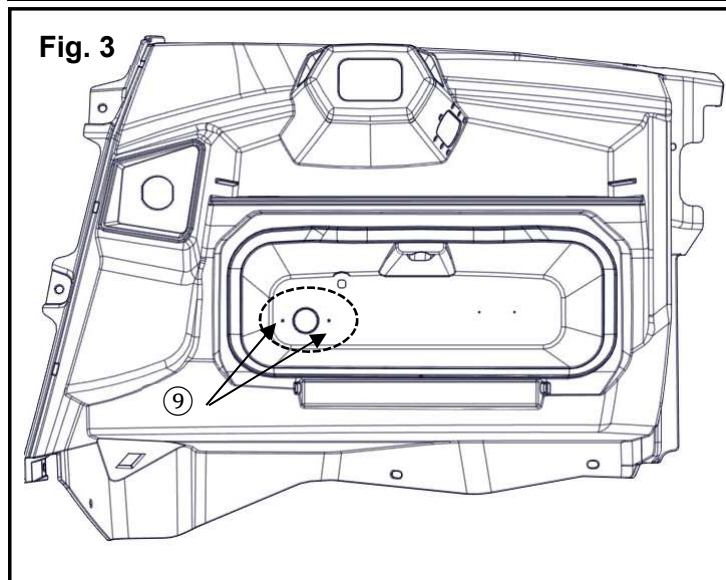


Fig. 3

PREPARATION:

- Place the vehicle on a secure and level surface.
- Set the parking brake.
- Clean the mounting surfaces before beginning installation.
- Disconnect the battery cables from the battery.

PARTS REMOVAL:

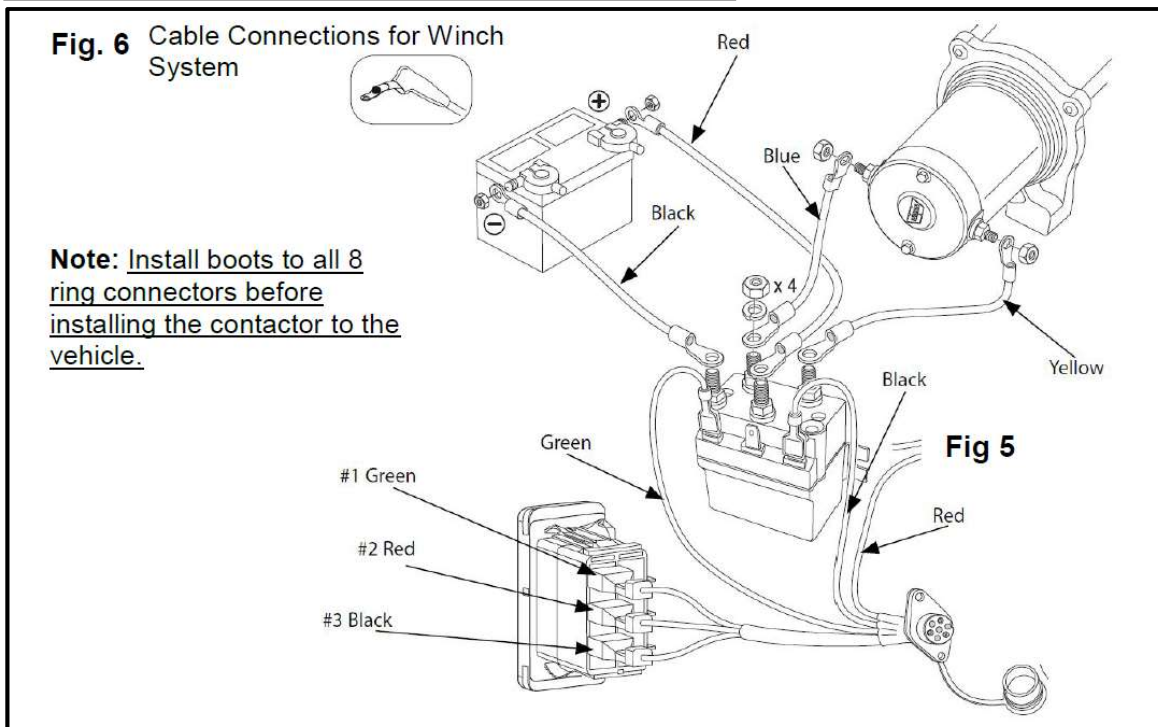
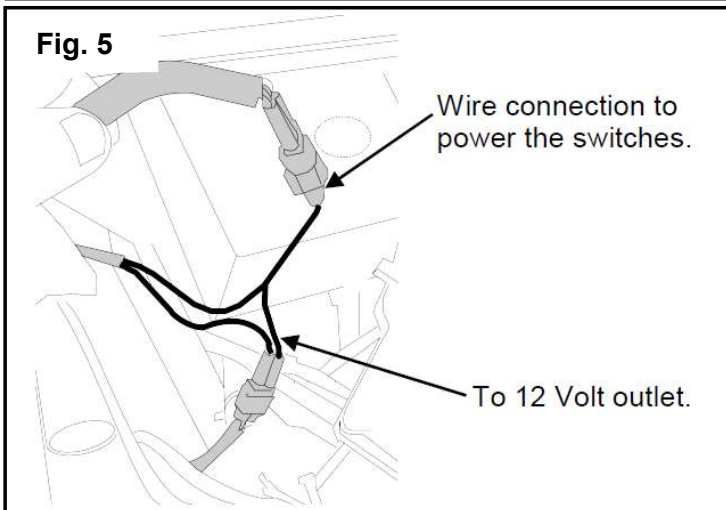
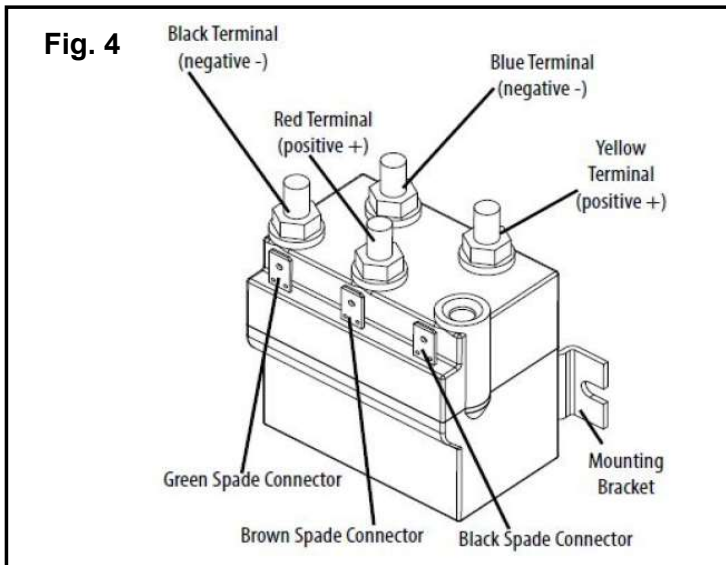
1. Remove the hood and the inner firewall. Retain the hardware for reinstallation. (Fig. 1)

INSTALLATION:

1. Install the winch in accordance to the instructions from the manufacture. Use the 12+13 hardware from this kit to attach it to the front brush guard.
2. Install the supplied boots from the winch kit to all eight ring terminal connectors. (Fig. 6)
3. Insert two 7 M5 Clip Nuts into the molded mounting location under the hood. (Fig. 2)
4. Install the Contactor in the hood section using screws supplied in the winch kit and Fig. 2 shows the mounting orientation. (Align the Contactor with the terminals facing to the driver's side.)
5. Install the 1 WIRE 1, Red to the (+) terminal on the Contactor. The Contactor is color coded for the terminal connections. (Fig. 4)
6. Install the 2 WIRE 2, Black to the (-) terminal on the Contactor. (Fig. 4 and 6)
7. Connect the 3 WIRE 3, Blue (-) and 4 WIRE 4, Yellow (+) wires to the Contactor. Route them down behind the grill and connect them to the winch. Use 6 Cable Ties to secure the two wires to the vehicle. (Fig. 2)
8. Route the 1 WIRE 1, Red and 2 WIRE 2, Black wires to the battery location. Leave the battery disconnected. The battery will be connected in Step 18.

INSTALL THE REMOTE CONNECTOR:

9. The 5 Remote Control Cable in this Winch Wiring Kit includes the connector for the Winch's remote control and for the rocker switch.
10. Look for a 7/8" circle inside the glovebox. This is the mounting location for the remote in the bottom of the glovebox. Drill a pilot hole, and then use a hole saw to cut a 7/8" hole for the connector, feed the 5 Remote Control Cable through the hole. Route the 5 Remote Control Cable into the electrical bay and to the Contactor. Coil up excess wire and secure with cable ties. (Fig. 3)
11. Use two 9 #2 Phillips Head screws to secure connector to the glovebox. (Fig. 3)
12. Separate the existing connector for the 12V power outlet behind the dashboard and insert into the 5 Remote Control Cable. (Fig. 5)
13. Remove one of the center console hole



- covers for the location of the rocker switch.
14. Route the green, black and red wires of the ⑤ Remote Control Cable out to the center console hole.
 15. Attach the green, red and black wires to the back of the rocker switch. (Fig. 6)
 16. Insert the ⑩ Switch into the center console.
 17. Route and connect the black and green wires to the Contactor. Note the wire locations. (Fig. 4)
 18. Reinstall the firewall with the stock hardware and torque to 8 Nm. (5.9 ft-lb and 0.8 m-kg)
 19. Reconnect the battery terminals and winch wires from Step 5 to the battery. (Fig. 6)
 20. Connect ⑪ Hand Held Switch and test winch operation.
 21. Thread in two ⑧ M10x20 Socket Head Bolts for the fairlead and torque to 16 Nm (1.6 m-kg or 12 lb-ft).

MAINTENANCE:

Periodically, check torque on all hardware. If loose hardware is found, re-torque to specification.

CARE AND CLEANING:

Clean painted metal parts with a clean soft cloth and mild soap and water solution. Rinse and dry.

CUSTOMER SERVICE:

For further information see your Yamaha dealer.

ESTIMATED TIME TO INSTALL: 0.5 HRS.